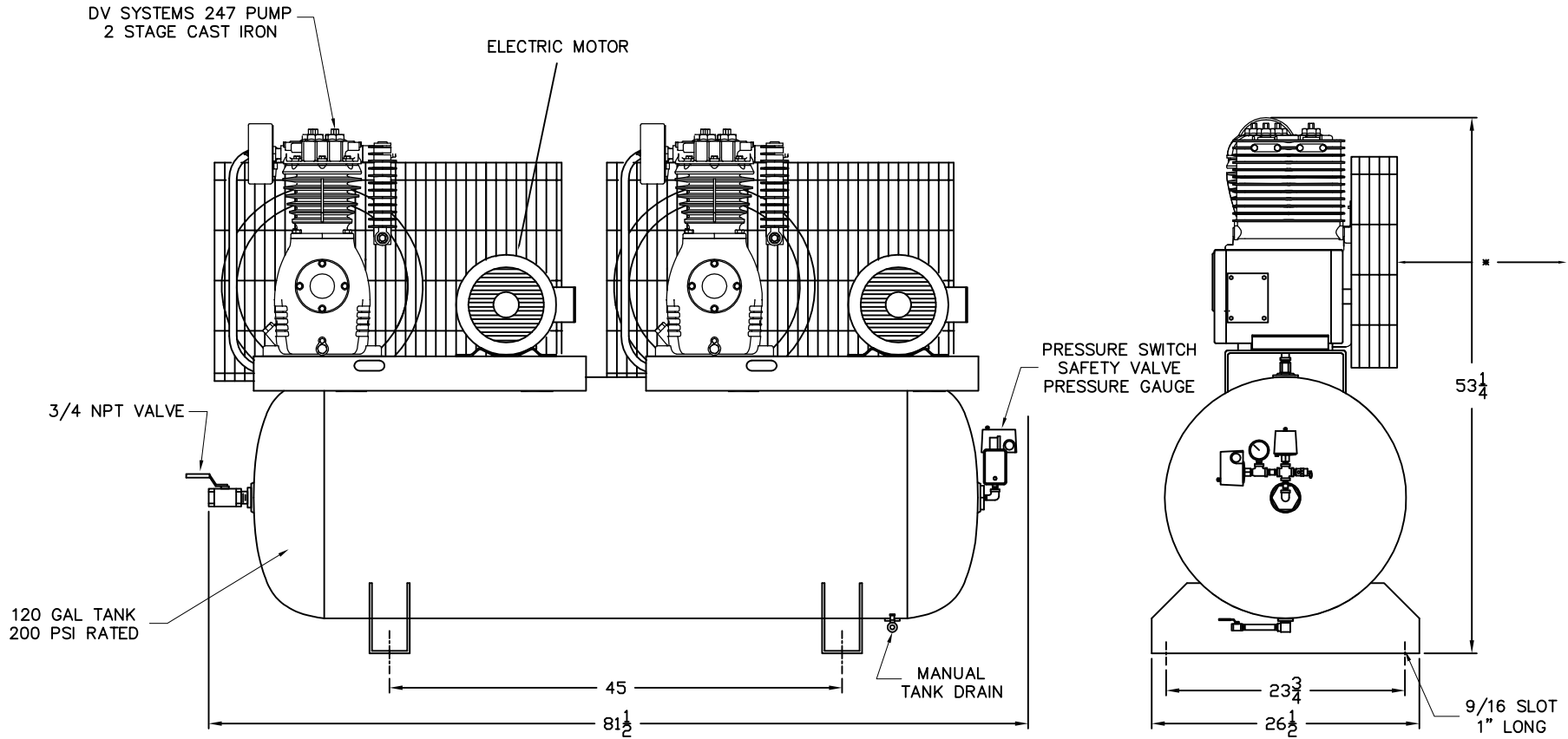


REV.	DATE	REVISION DESCRIPTION	PCN NO.
A	17/02/05	AMP DRAW @ 230-60-1 WAS 31.0	05-02
B	17/11/14	CAST INTERCOOLER, BELT GUARD	---



COMPRESSOR OUTFIT DATA				PRESSURE SETTING		RECEIVER CAPACITY		COMPRESSOR PUMP DATA				WEIGHT		ELECTRICAL					
MODEL	HP	DISPL. SCFM	DEL'Y SCFM	PSIG	KPA	GAL.	LITRS	TYPE	CYLD.	STAGE	RPM	LB.	KG.	VOLTAGE	230/1	200/3	230/3	460/3	575/3
TAS-5562	7.5	2 X 28.9	2 X 25.9	150	1034	120	454	247	2	2	800	1103	500	F.L.A.	36.0	23.0	21.6	10.8	8.2

* Allow 18" minimum clearance for proper air flow across the compressor.

IMPORTANT NOTE: THIS PRINT IS THE CONFIDENTIAL PROPERTY OF DV SYSTEMS, INC. IT IS NOT TO BE USED OR REPRODUCED IN ANY MANNER, NOR SUBMITTED TO OTHER PARTIES FOR EXAMINATION WITHOUT THE PRIOR APPROVAL OF DV SYSTEMS, INC. DV SYSTEMS, INC. IS CONTINUALLY TRYING TO IMPROVE ITS PRODUCTS, SPECIFICATIONS SUBJECT TO CHANGE WITHOUT NOTICE.

FRACTIONAL DIMENSIONS: $\pm 1/32$
 DECIMAL DIMENSION: $\pm .005$
 ANGLES: $\pm 1'$
 *UNLESS OTHERWISE SPECIFIED

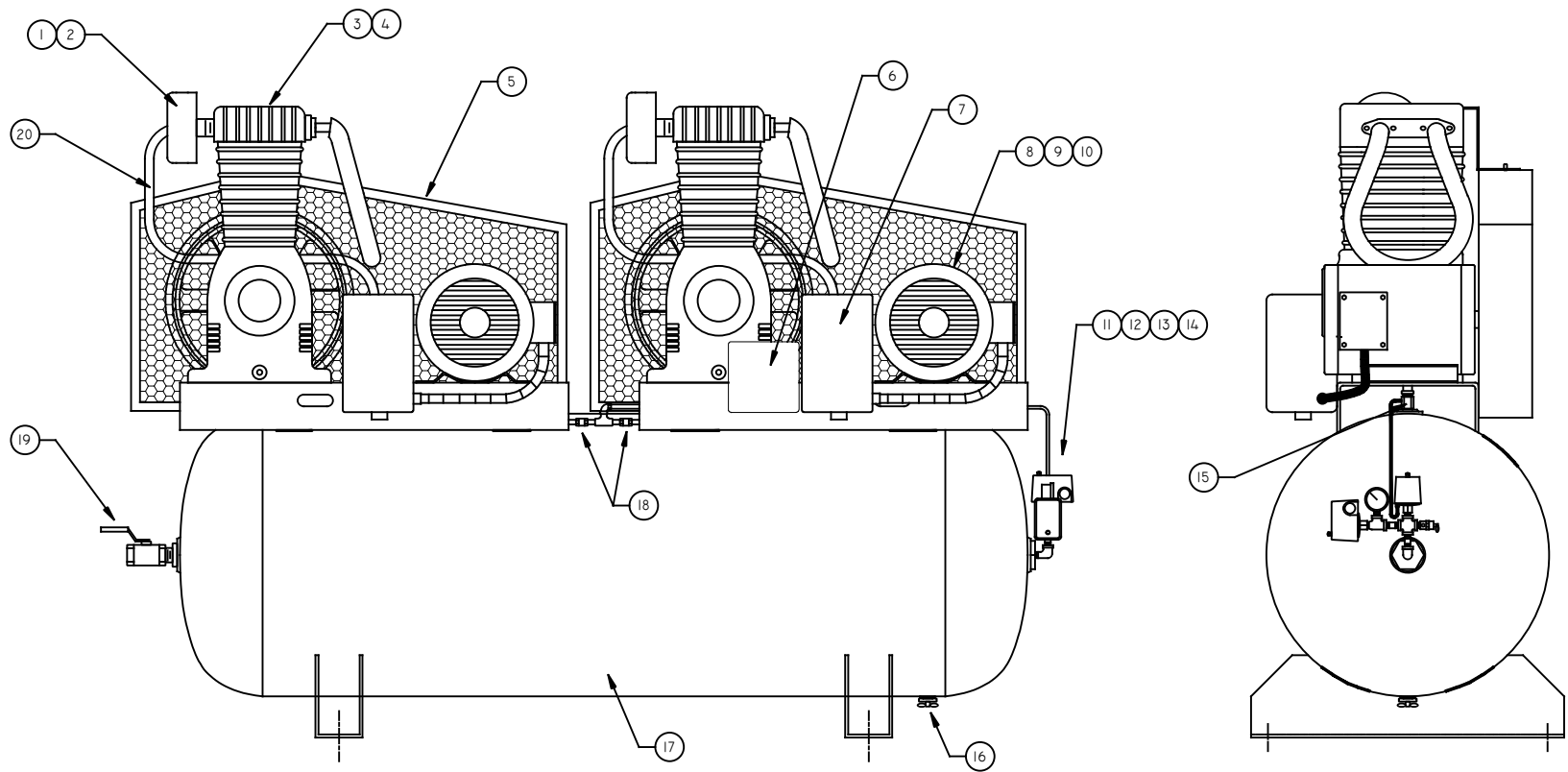


NAME OF PROJECT				DESCRIPTION OF DRAWING			
7-1/2 HP HEAVY DUTY SERIES DUPLEX COMPRESSOR				COMPRESSOR OUTFIT			
DRAWN BY		CHECKED BY		DATE		SCALE	
A SMITH				20NOV00		N.T.S.	
DRAWING NO.				SHT NO/REV			
TAS-5562				B			

PART NUMBER	DESCRIPTION	8	MO-9033	MOTOR 230-60-1
1 357-9401	FILTER ASSEMBLY		MO-6507	MOTOR 200-60-3
2 357-9701	FILTER ELEMENT		MO-6535	MOTOR 230/460-60-3
3 247-4502	COMPRESSOR PUMP		MO-6514	MOTOR 575-60-3
4 432-2-1	FLYWHEEL - 20" OD		PU-9193	MOTOR PULLEY
5 EG-9485	BELT GUARD	9	BT-9042	BELTS (1 PHASE)
6 ALT230	ALTERNATOR RELAY 230V		BT-39	BELTS (3 PHASE)
TRN-460230	TRANSFORMER (460V UNIT)		11 SSS-9003UII5150	PRESSURE SWITCH C/W UNLOADER
TRN-575230	TRANSFORMER (575V UNIT)		12 SSS-9003-II5150	PRESSURE SWITCH
7 MS-140-03	MAG STARTER 230-60-1		13 GA-250	PRESSURE GAUGE
MS-340-43	MAG STARTER 200/230/460/575-60-3	14	TIA-5200	SAFETY VALVE 200 PSI

15	CCV-9406	CHECK VALVE
16	SS-2707	DRAIN COCK
17	TA-9507	TANK - 120 GALLON DUPLEX
18	VA-9715-1	CHECK VALVE
19	VA-9705	BALL VALVE
20	CT-9758	AFTERCOOLER

REV.	DATE	REVISION DESCRIPTION	PCN NO.
A	17.02.05	BELTS, PULLEY CHANGED	05-02
B	22.12.14	MO-9514 TO MO-6514	
C	01.04.16	CCV-9406 WAS CCV-9403, CT-9758 WAS CT-9739	16-07



IMPORTANT NOTE: This print is the confidential property of DEVAIR, INC. It is not to be used or reproduced in any manner, nor submitted to other parties for examination without the prior approval of DEVAIR, INC.

FRACTIONAL DIMENSIONS: $\pm 1/32$ DECIMAL DIMENSION: $\pm .005$ ANGLES: $\pm 1^\circ$ *UNLESS OTHERWISE SPECIFIED		NAME OF PROJECT		DESCRIPTION OF DRAWING	
		7.5 HP DUPLEX UNIT C/W 247 PUMPS		COMPRESSOR OUTFIT	
DRAWN BY		CHECKED BY	DATE	SCALE	DRAWING NO.
ADAM SMITH			22DEC'14	N.T.S.	TAS-5562
					SHT NO
					REV
					C

NAME OF PROJECT				DESCRIPTION OF DRAWING	
7.5 HP DUPLEX UNIT C/W 247 PUMPS				COMPRESSOR OUTFIT	
DRAWN BY		CHECKED BY	DATE	SCALE	DRAWING NO.
ADAM SMITH			22DEC'14	N.T.S.	TAS-5562
					SHT NO
					REV
					C