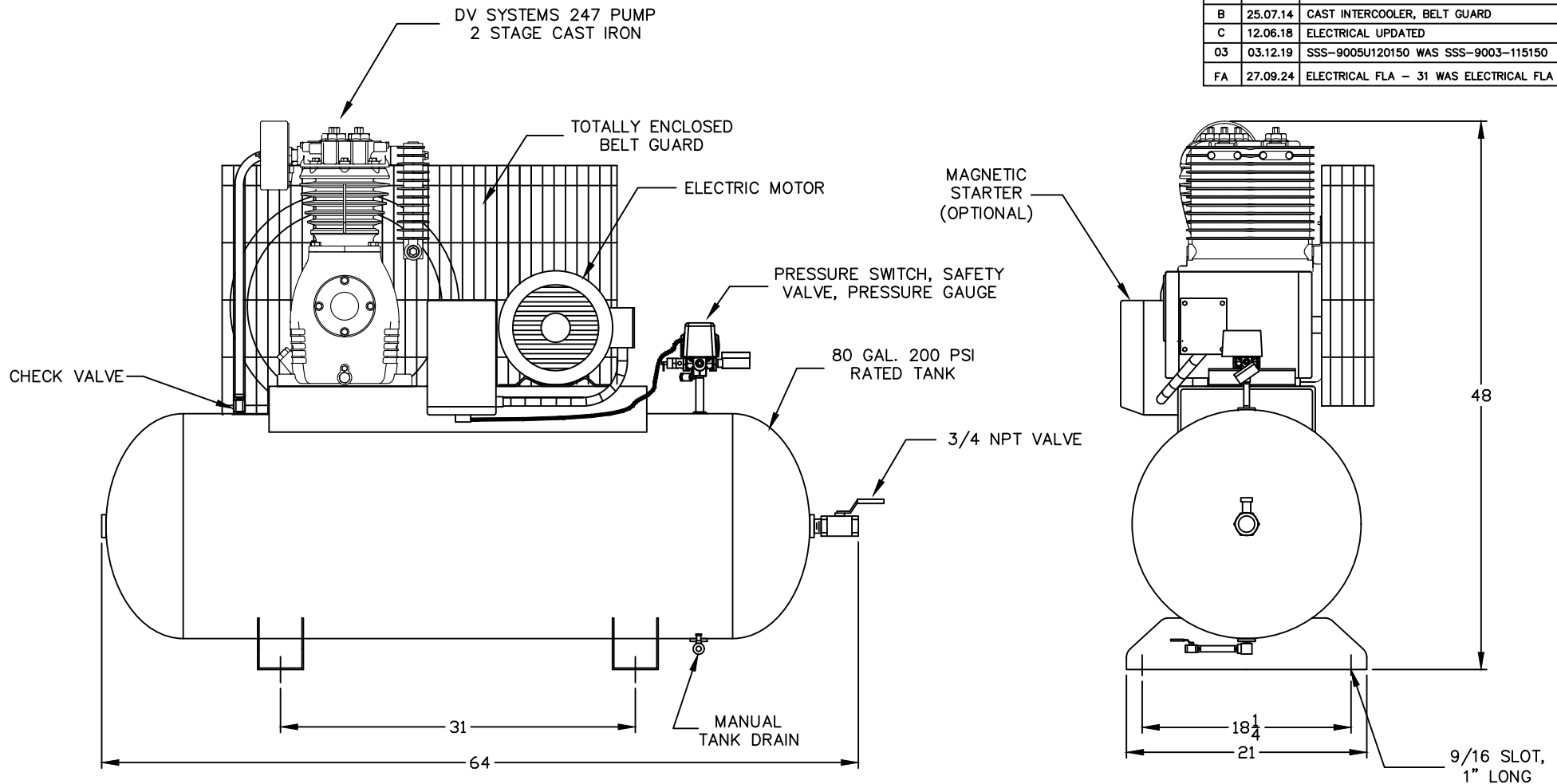


REV.	DATE	REVISION DESCRIPTION	ECN NO.
A	17.02.05	AMP DRAW @ 230-60-1 WAS 31.0A	05-02
B	25.07.14	CAST INTERCOOLER, BELT GUARD	13-09
C	12.06.18	ELECTRICAL UPDATED	----
03	03.12.19	SSS-9005U120150 WAS SSS-9003-115150	1130665
FA	27.09.24	ELECTRICAL FLA - 31 WAS ELECTRICAL FLA -36	1523174



COMPRESSOR OUTFIT DATA				PRESSURE SETTING		RECEIVER CAPACITY		COMPRESSOR PUMP DATA				WEIGHT		ELECTRICAL					
MODEL	HP	DISP SCFM	DEL'Y SCFM	PSIG	KPA	GAL.	LITRS	TYPE	CYLD.	STAGE	RPM	LB.	KG.	VOLTAGE	230/1	200/3	230/3	460/3	575/3
TAS-5052	7.5	28.9	25.9	150	1034	80	302	247	2	2	800	700	317	F.L.A.	31.0	23.3	19.4	9.7	8

IMPORTANT NOTE: THIS PRINT IS THE CONFIDENTIAL PROPERTY OF GARDNER DENVER CANADA, CORP. IT IS NOT TO BE USED OR REPRODUCED IN ANY MANNER, NOR SUBMITTED TO OTHER PARTIES FOR EXAMINATION WITHOUT THE PRIOR APPROVAL OF GARDNER DENVER CANADA, CORP. GARDNER DENVER CANADA, CORP. IS CONTINUALLY TRYING TO IMPROVE ITS PRODUCTS, SPECIFICATIONS SUBJECT TO CHANGE WITHOUT NOTICE.

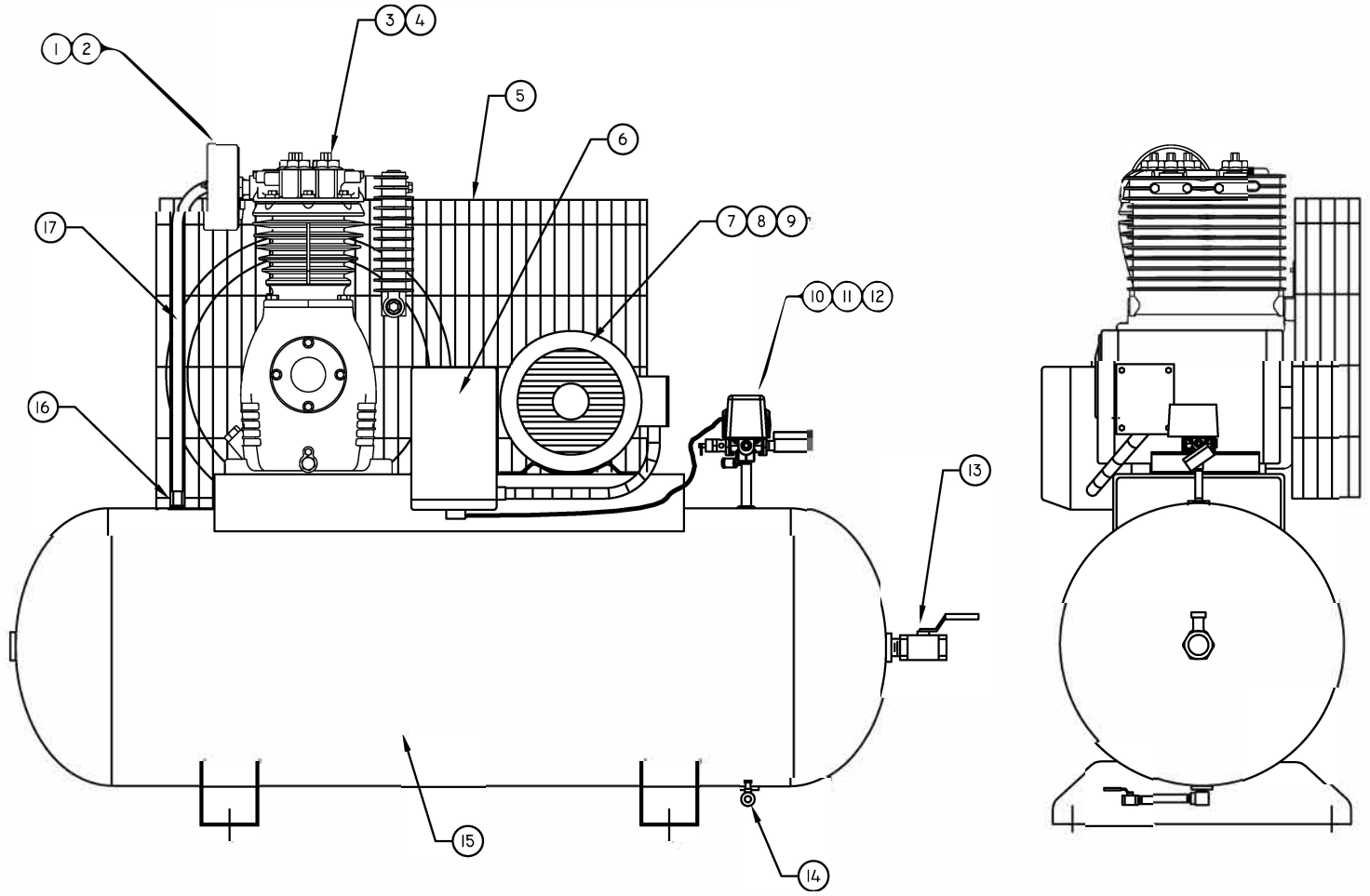
FRACTIONAL DIMENSIONS: $\pm 1/32$
 DECIMAL DIMENSION: $\pm .005$
 ANGLES: $\pm 1'$
 *UNLESS OTHERWISE SPECIFIED



NAME OF PROJECT				DESCRIPTION OF DRAWING			
HDI PISTON COMPRESSOR				COMPRESSOR OUTFIT			
DRAWN BY		CHECKED BY		DATE		SCALE	
IRAJ FILSOFI				18 JAN. 99		N.T.S.	
DRAWING NO.				SHT NO		REV	
TAS-5052						FA	

PART NUMBER	DESCRIPTION
1 357-9401	FILTER ASSEMBLY
2 357-9701	FILTER ELEMENT
3 247-4502	COMPRESSOR PUMP
4 432-2-1	FLYWHEEL - 20" OD
5 EG-9495	BELT GUARD
6 MS-140-03	MAG STARTER 230-60-1
MS-340-43	MAG STARTER 200/230-60-3
MS-340-45	MAG STARTER 460-60-3
MS-340-69	MAG STARTER 575-60-3
7 MO-9320	MOTOR 230-60-1
MO-6507	MOTOR 200-60-3
MO-6535	MOTOR 230/460-60-3
MO-6514	MOTOR 575-60-3
8 PU-9193	MOTOR PULLEY
9 BT-9042	BELTS (2) (1 PHASE)
BT-39	BELTS (2) (3 PHASE)
10 SSS-9005UI20150	PRESSURE SWITCH
11 GA-250	PRESSURE GAUGE
12 TIA-5200	SAFETY VALVE 200 PSI
13 VA-9705	BALL VALVE
14 VA-9411	BALL VALVE
15 TA-9497-2	TANK - 80 GAL HORIZ
16 CCV-9406	CHECK VALVE
17 CT-9757	AFTERCOOLER TUBE

REV.	DATE	REVISION DESCRIPTION	ECN NO.
C	09.08.12	VA-9411 ADDED	12-10
D	25.07.14	BELT GUARD, CAST INTERCOOLER	13-09
E	01.04.16	CCV-9406 WAS CCV-9403, CT-9757 WAS CT-9726	16-07
05	28.11.19	SSS-9005UI20150 WAS SSS-9003UI15150	1130665
FA	26.09.24	MO-9320 WAS MO-9033	1523174



IMPORTANT NOTE: THIS PRINT IS THE CONFIDENTIAL PROPERTY OF GARDNER DENVER CANADA, CORP. IT IS NOT TO BE USED OR REPRODUCED IN ANY MANNER, NOR SUBMITTED TO OTHER PARTIES FOR EXAMINATION WITHOUT THE PRIOR APPROVAL OF GARDNER DENVER CANADA, CORP. GARDNER DENVER CANADA, CORP. IS CONTINUALLY TRYING TO IMPROVE ITS PRODUCTS, SPECIFICATIONS SUBJECT TO CHANGE WITHOUT NOTICE.

FRACTIONAL DIMENSIONS: $\pm 1/32$
 DECIMAL DIMENSION: $\pm .005$
 ANGLES: $\pm 1^\circ$
 *UNLESS OTHERWISE SPECIFIED



NAME OF PROJECT		DESCRIPTION OF DRAWING	
7.5 HP SIMPLEX UNIT C/W 247 PUMP		COMPRESSOR OUTFIT	
DRAWN BY	CHECKED BY	DATE	SCALE
IRAJ FILSOOFI		28 APR/00	N.T.S.

DRAWING NO.	SHT NO	REV
TAS-5052		FA