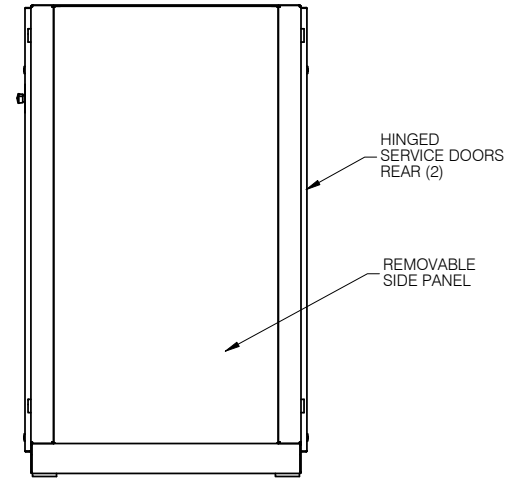
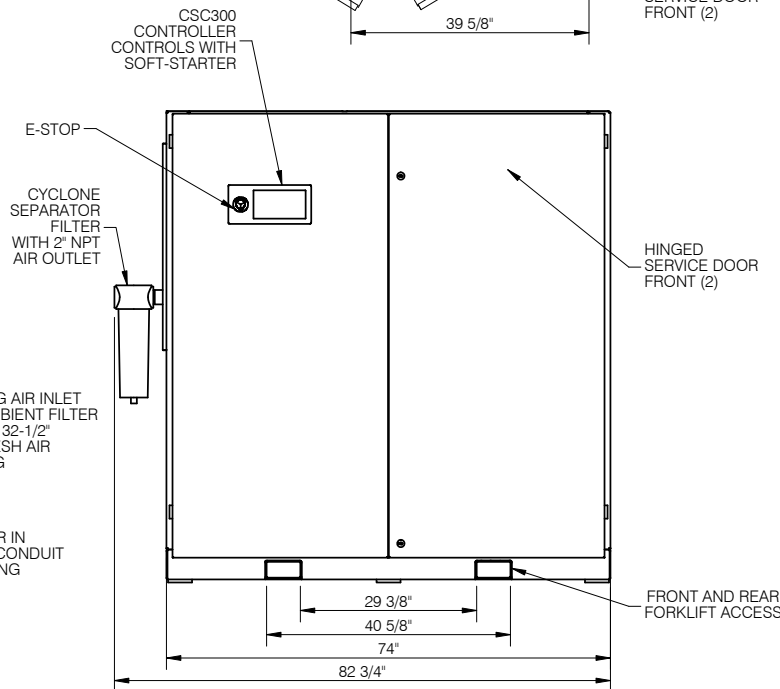
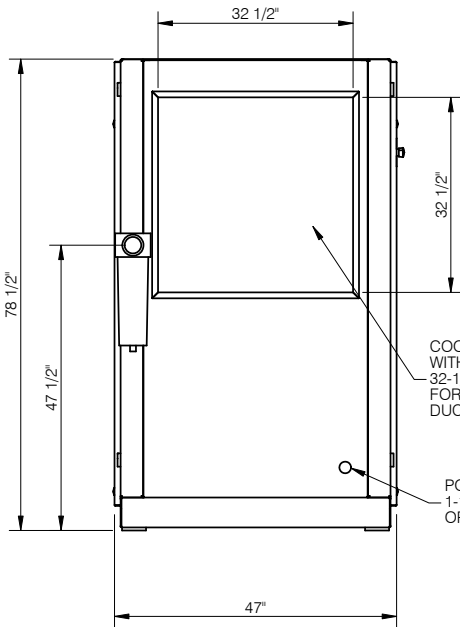
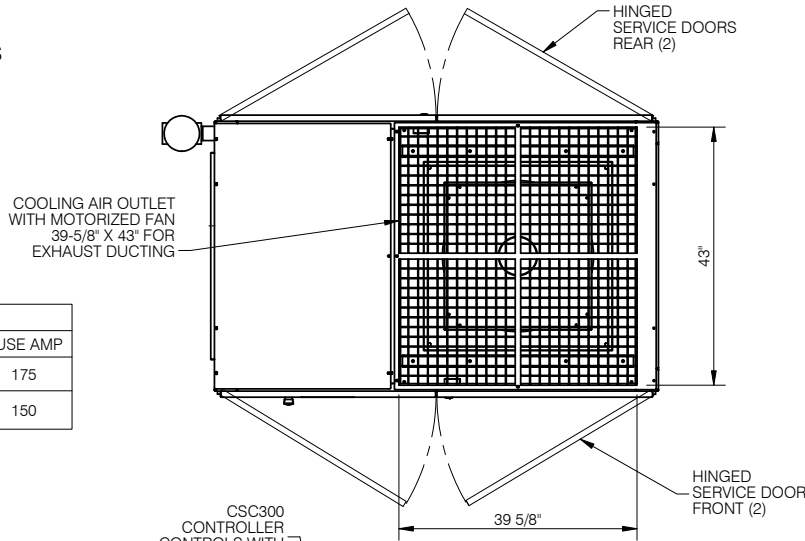


MODEL NO.	HP	OPERATING PRESSURE PSI	SCFM	AIR END RPM	MOTOR RPM	NOMINAL SOUND @ 1 METRE	MOTOR NAMEPLATE AMP		FILTER ELEMENT	WEIGHT LBS
							460V	575V		
K100	100	100	468	3565	3565	75	113.6	91.5	CYCLONE	3205
		110								

INSTALLATION REQUIREMENTS:

1. MAINTAIN 4 FEET DISTANCE FROM WALLS AND OTHER OBJECTS FOR PURPOSE OF COOLING AND SERVICING
2. COMPRESSOR MUST BE LEVEL AND ANCHORED TO SOLID LEVEL FLOOR
3. AMBIENT CONDITIONS:
10°C (50°F) MIN. 40°C (104°F) MAX.

UNIT TYPE	VOLTAGE	PHASE	FUSE TYPE	FUSE AMP
FIXED SPEED	460	3	J TIME-DELAY (AJT)	175
	575			150



IMPORTANT NOTE: This print is the confidential property of DV SYSTEMS, INC. It is not to be used or reproduced in any manner, nor submitted to other parties for examination without the prior approval of DV SYSTEMS, INC. DV SYSTEMS, INC. is continually trying to improve its products, specifications subject to change without notice.



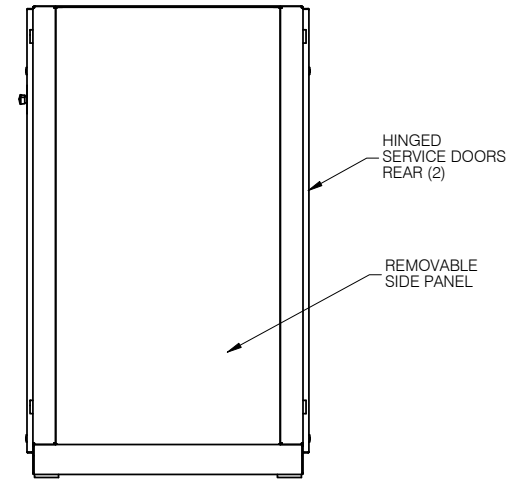
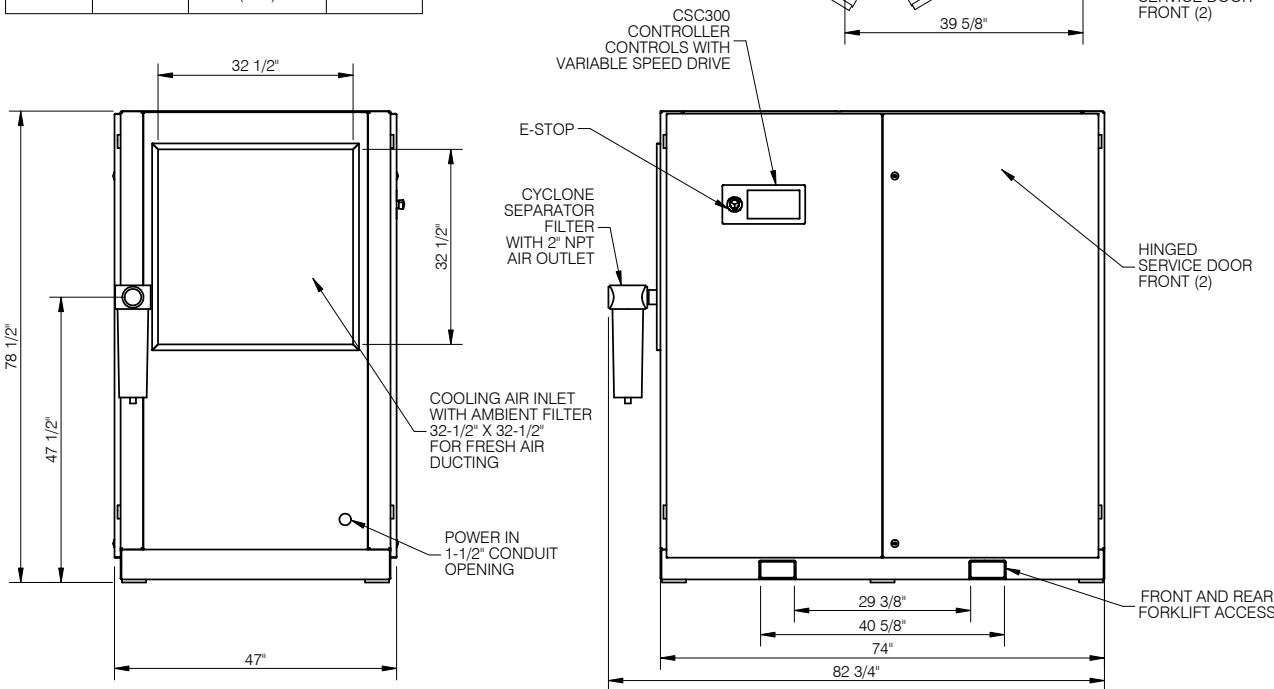
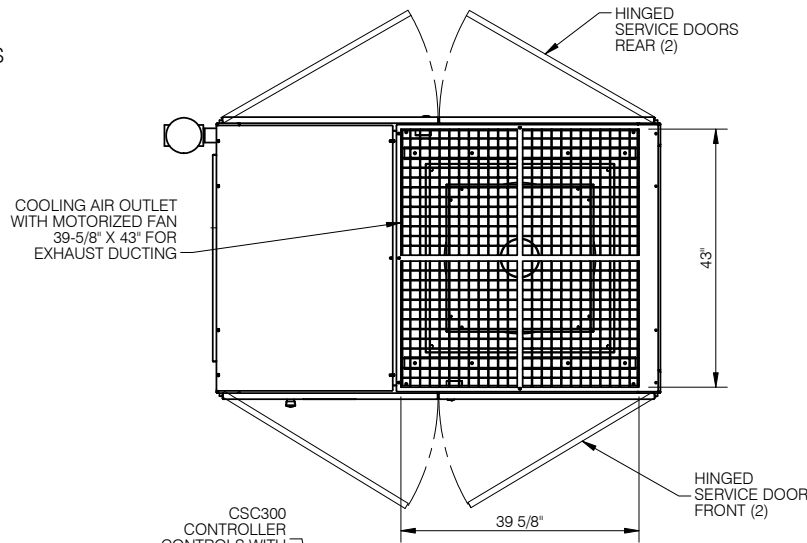
NAME OF PROJECT				DESCRIPTION OF DRAWING		
K100 FIXED SPEED COMPRESSOR WITH SOFT-STARTER				SALES-ENGINEERING DRAWING		
DRAWN BY		CHECKED BY	DATE	SCALE	DRAWING NO.	SHT NO/REV
LT			10/19/16	N.T.S	K100-SOFT	

MODEL NO.	HP	OPERATING PRESSURE PSI	SCFM	AIR END RPM	MOTOR RPM	NOMINAL SOUND @ 1 METRE	MOTOR NAMEPLATE AMP		FILTER ELEMENT	WEIGHT LBS
							460V	575V		
K100VSD	100	100	463	3560	3565	75	113.6	91.5	CYCLONE	3300
		150	388	2966						
		175	355	2729						

INSTALLATION REQUIREMENTS:

1. MAINTAIN 4 FEET DISTANCE FROM WALLS AND OTHER OBJECTS FOR PURPOSE OF COOLING AND SERVICING
2. COMPRESSOR MUST BE LEVEL AND ANCHORED TO SOLID LEVEL FLOOR
3. POWER SUPPLY TO THE UNIT MUST BE SYMMETRICAL THREE-PHASE POWER WITH A WYE AND GROUNDED NEUTRAL CONFIGURATION
4. AMBIENT CONDITIONS:
10°C (50°F) MIN. 40°C (104°F) MAX.

VOLTAGE	PHASE	FUSE TYPE	FUSE AMP
460	3	J FAST-ACTING (DFJ)	150
575			110



IMPORTANT NOTE: This print is the confidential property of DV SYSTEMS, INC. It is not to be used or reproduced in any manner, nor submitted to other parties for examination without the prior approval of DV SYSTEMS, INC. DV SYSTEMS, INC. is continually trying to improve its products, specifications subject to change without notice.

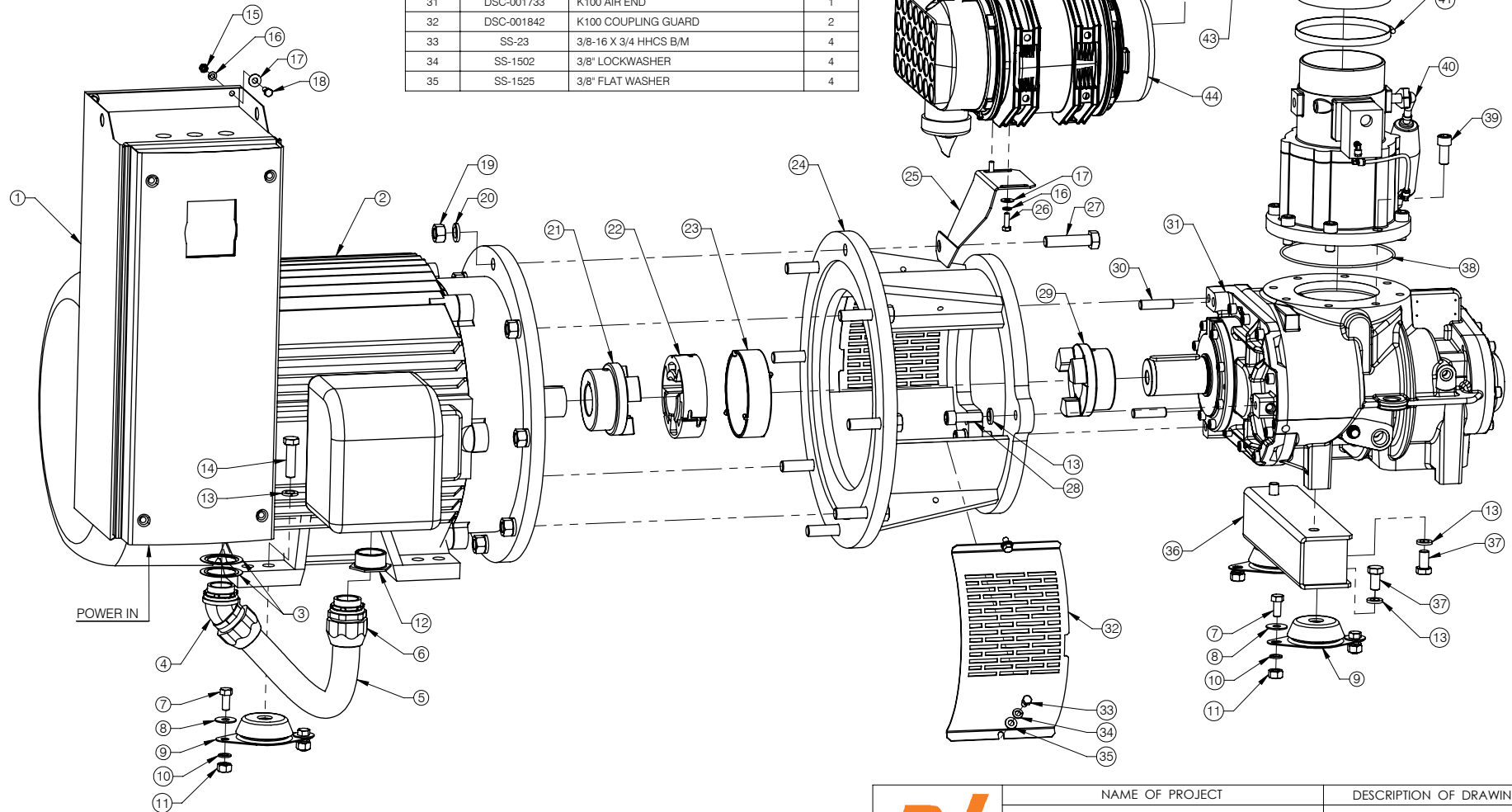


NAME OF PROJECT				DESCRIPTION OF DRAWING	
K100VSD SCREW COMPRESSOR				SALES-ENGINEERING DRAWING	
DRAWN BY		CHECKED BY	DATE	SCALE	DRAWING NO.
LT			10/19/16	N.T.S	K100-VSD
				SHT NO	REV

ITEM NO.	PART NUMBER	DESCRIPTION	QTY.
1	DSC-001915 DSC-001917	INVERTER 100HP 460V INVERTER 100HP 575V	1
2	MO-9287 MO-9288	MOTOR 100HP 460/60/3 MOTOR 100HP 575/60/3	1
3	DSC-001694	REDUCER WASHER 2" X 1-1/2"	2
4	DSC-001937	1-1/2" STRT PLASTIC CONNECTOR	1
5	DSC-001935	1-1/2" FLEX CONDUIT	1
6	DSC-001936	1-1/2" STRT PLASTIC CONNECTOR	1
7	SS-73	1/2-13 X 1.125" HHCS	8
8	SS-1527	1/2" FLAT WASHER	8
9	DSC-001734	K-SERIES ISOLATORS	4
10	SS-1506	1/2" MEDIUM LOCKWASHER	8
11	SS-659	1/2-13 HEX NUT	8
12	SS-9851	ELECTRICAL BUSHING 2" X 1-1/2"	1
13	SS-1508	5/8" MEDIUM LOCKWASHER	9
14	SS-10168	M16-2.0 X 60MM HHCS	2

ITEM NO.	PART NUMBER	DESCRIPTION	QTY.
15	SS-725	5/16" HEX NUT	4
16	SS-1503	5/16" LOCKWASHER	6
17	SS-1524	5/16" FLAT WASHER	6
18	SS-13	5/16-18 X 7/8" HHCS	4
19	SS-663	3/4-10 HEX NUT	8
20	SS-1509	3/4" MEDIUM LOCKWASHER	8
21	DSC-001735	K100 MOTOR COUPLING	1
22	DSC-001762	K100 COUPLING SPIDER	1
23	DSC-001763	K100 COUPLING LOCKING RING	1
24	DSC-001761	K100 MOTOR-AIR END ADAPTER	1
25	DSC-001797	K100 AIR FILTER BRACKET	1
26	SS-10105	M8 X 25MM HHCS	2
27	SS-99	HHCS 3/4-10 X 3.25"	8
28	SS-10066	M16 X 50MM SHCS	3
29	DSC-001736	AIR END COUPLING K100	1
30	DSC-001905	K100 AIR END GUIDE PIN	2
31	DSC-001733	K100 AIR END	1
32	DSC-001842	K100 COUPLING GUARD	2
33	SS-23	3/8-16 X 3/4 HHCS B/M	4
34	SS-1502	3/8" LOCKWASHER	4
35	SS-1525	3/8" FLAT WASHER	4

ITEM NO.	PART NUMBER	DESCRIPTION	QTY.
36	DSC-001760	AIR END BRACKET	1
37	SS-10162	M16-2.0 X 30MM HHCS	4
38	DSC-001948	K100 INTAKE VALVE O-RING	1
39	DSC-241	M16-2.0 X 35 HSCS	8
40	DSC-001767	K100 INTAKE VALVE	1
41	DSC-001939	K100 INTAKE FILTER CLAMP	1
42	DSC-001766	K100 AIR INLET FILTER ELBOW	1
43	DSC-001938	INTAKE FILTER CLAMP 88	1
44	DSC-001764	INLET FILTER HOUSING W/FILTER 75-100HP	1



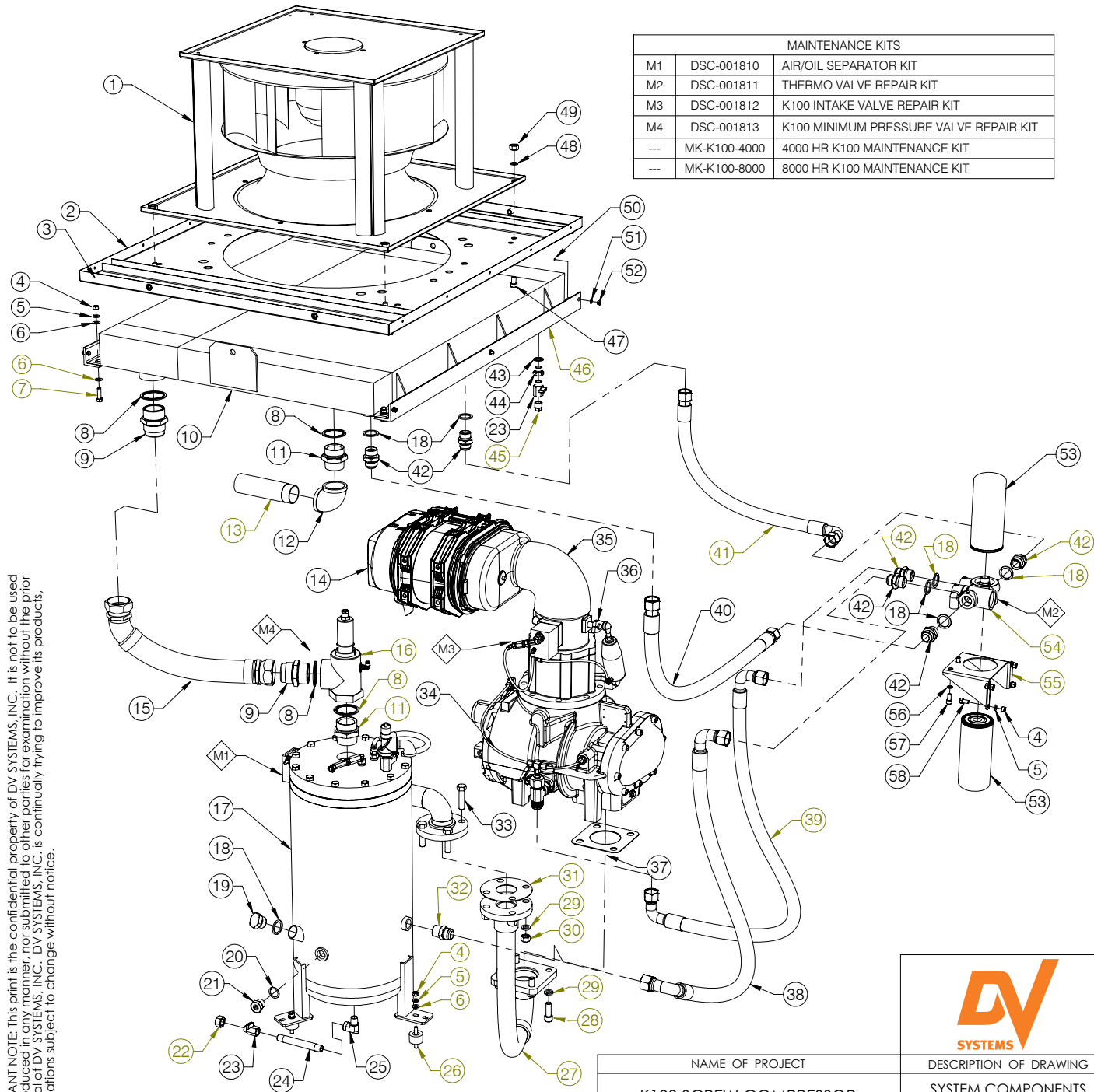
IMPORTANT NOTE: This print is the confidential property of DV SYSTEMS, INC. It is not to be used or reproduced in any manner, nor submitted to other parties for examination without the prior approval of DV SYSTEMS, INC. DV SYSTEMS, INC. is continually trying to improve its products, specifications subject to change without notice.

B	7/26/13	INVERTER PARTS UPDATED	---
A	3/30/12	INVERTER PARTS ADDED	---
REV.	DATE	REVISION DESCRIPTION	PCN NO.




NAME OF PROJECT				DESCRIPTION OF DRAWING		
K100 SCREW COMPRESSOR				DRIVE COMPONENTS		
DRAWN BY	CHECKED BY	DATE	SCALE	DRAWING NO.	SHT NO/REV.	
LT		10/29/10	N.T.S	K100	D1	B

IMPORTANT NOTE: This print is the confidential property of DV SYSTEMS, INC. It is not to be used or reproduced in any manner, nor submitted to other parties for examination without the prior approval of DV SYSTEMS, INC. DV SYSTEMS, INC. is continually trying to improve its products, specifications subject to change without notice.



MAINTENANCE KITS		
M1	DSC-001810	AIR/OIL SEPARATOR KIT
M2	DSC-001811	THERMO VALVE REPAIR KIT
M3	DSC-001812	K100 INTAKE VALVE REPAIR KIT
M4	DSC-001813	K100 MINIMUM PRESSURE VALVE REPAIR KIT
---	MK-K100-4000	4000 HR K100 MAINTENANCE KIT
---	MK-K100-8000	8000 HR K100 MAINTENANCE KIT

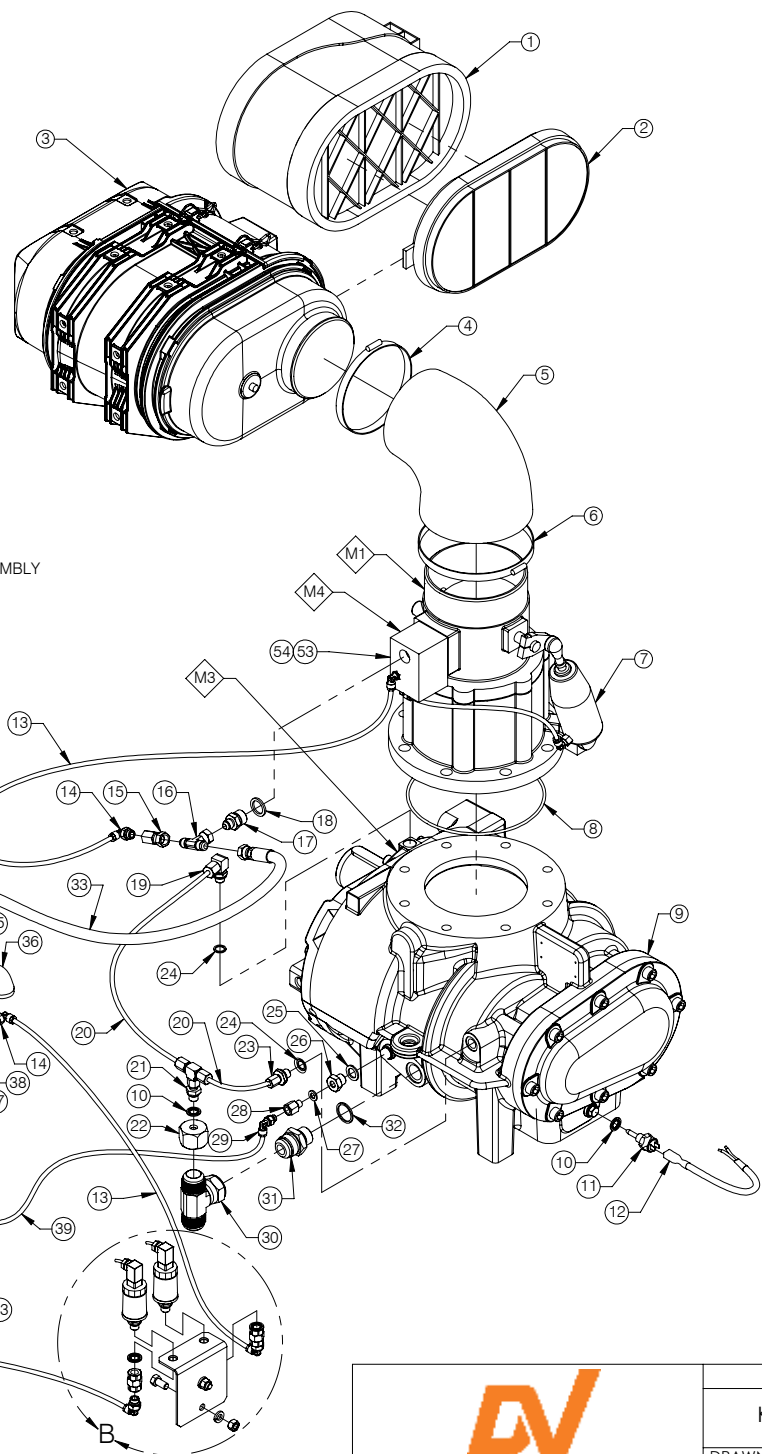
NAME OF PROJECT			
K100 SCREW COMPRESSOR			
DRAWN BY	CHECKED BY	DATE	SCALE
LT		11/04/10	N.T.S

		DESCRIPTION OF DRAWING	
		SYSTEM COMPONENTS	
DRAWING NO.	SHT NO	REV.	
K100	D2	B	

REV.	DATE	REVISION DESCRIPTION	PCN NO.
A	4/09/12	PART UPDATES	---
B	9/21/12	DSC-002259 ADDED, DSC-120 REMOVED	12-23

ITEM NO.	PART NUMBER	DESCRIPTION	QTY.
1	DSC-001879	K100 FAN ASSEMBLY	1
2	DSC-001809	K100 FAN BOX BASE PLATE	1
3	DSC-001814	K100 FAN BASE PLATE STRENGTHENER	2
4	SS-657	3/8-16 HEX NUT	23
5	SS-1502	3/8" LOCKWASHER	23
6	SS-1525	3/8" FLAT WASHER	11
7	SS-26	3/8-16 X 1-1/4 HHCS GR 5 Z	4
8	DSC-001871	BONDED WASHER 2"BSPP	4
9	DSC-001897	ADAPTER 2"BSPP(M) - JIC 32(M)	2
10	DSC-001732	HEAT EXCHANGER 75-100HP	1
11	DSC-001869	ADAPTER 2"BSPP(M) - 2"NPT(M)	2
12	SS-1078	2" NPT(F) GALV ELBOW	1
13	DSC-001920	J75-K100 AIR OUTLET PIPE	1
14	DSC-001764	INLET FILTER HOUSING W/FILTER 75-100HP	1
15	DSC-001896	K100 FLEXI-HOSE MPV-COOLER	1
16	DSC-001895	K100 MINIMUM PRESSURE VALVE	1
17	DSC-001731	AIR/OIL RECEIVER 75-100HP	1
18	DSC-386	BONDED WASHER R1"	7
19	DSC-001906	PLUG 1" BSPP	1
20	DSC-002259	COPPER WASHER 3/4"BSPP WD	1
21	DSC-001907	OIL SIGHT GLASS 1" BSPP	1
22	SS-1338	1/2" NPT HEX PIPE CAP	1
23	DSC-001924	OIL DRAIN BALL VALVE	2
24	SS-2137	1/2 X 6 LONG GALV NIPPLE	1
25	DSC-001922	1/2" NPT STREET ELBOW	1
26	DSC-001330	VIBRATION ISOLATOR	3
27	DSC-001892	K100 FLEXI-HOSE AE-SEP.TANK	1
28	SS-10065	M16-2.0 X 45MM SHCS GR8.8	4
29	SS-1508	5/8" MEDIUM LOCKWASHER	8
30	SS-661	5/8-11 HEX NUT	4
31	DSC-001894	K100 A/O REC.TANK INLET GASKET	1
32	DSC-001293	ADAPTER 1"NPT(M) - JIC 16	1
33	SS-84	5/8-11 X 2-1/2" HHCS	4
34	DSC-001733	K100 AIR END	1
35	DSC-001766	K100 AIR INLET FILTER ELBOW	1
36	DSC-001767	K100 INTAKE VALVE	1
37	DSC-001893	K100 AIR END OUTLET GASKET	1
38	DSC-001918	1" OIL HOSE A/O - THERM.VALVE	1
39	DSC-001919	1" OIL HOSE THERM.VALVE - AE	1
40	DSC-001908	1" OIL HOSE THERM.VALVE - COOLER	1
41	DSC-001909	1" OIL HOSE COOLER - THERM.VALVE	1
42	DSC-575	ADAPTER R1" - JIC 16	6
43	DSC-200	BONDED WASHER 1/2" BSPP	1
44	DSC-001923	ADAPTER 1/2"BSPP(M) - 1/2"NPT(F)	1
45	SS-1230	1/2" NPT PIPE PLUG	1
46	DSC-001798	COOLER SUPPORT BRACKET	2
47	SS-45	1/2-13 X 1.125" HHCS	4
48	SS-1506	1/2" MEDIUM LOCKWASHER	4
49	SS-659	1/2-13 HEX NUT	4
50	DSC-597	1/4-20 X 3/4" HHCS	6
51	SS-1505	1/4" MEDIUM LOCKWASHER	6
52	SS-655	1/4-20 HEX NUT	6
53	DSC-624	OIL FILTER	2
54	DSC-001877	THERMO VALVE 75-100HP	1
55	DSC-001808	THERMO VALVE BRACKET 75-100HP	1
56	SS-1515	M10 HC LOCKWASHER	2
57	SS-10023	M10 X 20MM SHCS	2
58	SS-23	3/8-16 X 3/4" HHCS	16

MAINTENANCE KITS		
M1	DSC-001812	K100 INTAKE VALVE REPAIR KIT
M2	DSC-001813	K100 MINIMUM PRESSURE VALVE REPAIR KIT
M3	DSC-002041 DSC-002042 DSC-002043	K100 AIR END INTERNAL RING K100 AIR END SHAFT SEAL RING K100 AIR END SEAL O-RING
M4	DSC-002272	VALVE PLUNGER KIT J75-K100



ITEM NO.	PART NUMBER	DESCRIPTION	QTY.
1	DSC-001880	AIR INLET FILTER ELEMENT 75-100HP	1
2	DSC-001849	INTAKE SAFETY FILTER	1
3	DSC-001764	INLET FILTER HOUSING W/FILTER 75-100HP	1
4	DSC-001938	INTAKE FILTER CLAMP 88	1
5	DSC-001766	K100 AIR INLET FILTER ELBOW	1
6	DSC-001939	K100 INTAKE FILTER CLAMP 104	1
7	DSC-001767	K100 INTAKE VALVE	1
8	DSC-001948	K100 INTAKE VALVE O-RING	1
9	DSC-001733	K100 AIR END	1
10	DSC-001217	BONDED WASHER 1/4" BSPP	4
11	DSC-001238	CSC200 / CSC300 TEMPERATURE PROBE	1
12	DSC-001360	TEMPERATURE PROBE CABLE CSC200300	1
13	DSC-482	PNEUMATIC TUBE BLACK 6MM OD	---
14	DSC-444	1/4"NPT ELBOW X 6MM TUBE FITTING	2
15	DSC-001883	ADAPTER 1/4"NPT(F) - JIC 6(F)	1
16	DSC-001882	TEE JIC 6(MX2) - JIC 6(F)	1
17	DSC-001881	ADAPTER 1/2"BSPP(M) - JIC 6	1
18	DSC-200	BONDED WASHER 1/2" BSPP	1
19	DSC-001889	COMP.ELBOW 1/4"BSPP SWIV. - 6MM	1
20	DSC-001890	6MM STEEL TUBE	1
21	DSC-001887	TEE 6MM TUBE - 1/4"BSPP(M)	1
22	DSC-001340	CAP JIC 16 - 1/4"BSPP	1
23	DSC-001888	1/4"BSPP(M) - 6MM TUBE	1
24	DSC-001968	COPPER SEALING RING 1/4"BSPP	2
25	DSC-427	BONDED WASHER 3/8"	1
26	DSC-001765	ADAPTER 3/8"BSPP(M) - 1/8"BSPP(F)	1
27	DSC-263	1/8" BONDED WASHER	1
28	DSC-677	ORIFICE 1MM	1
29	DSC-185	1/8"BSPP ELBOW X 6MM TUBE FITTING	3
30	DSC-001339	TEE JIC 16 (M-F-M)	1
31	DSC-001885	ADAPTER-SH 3/4"BSPP(M) - JIC 16(M)	1
32	DSC-002097	COPPER WASHER 3/4"BSPP	1
33	DSC-001904	3/8" AIR HOSE A/O - INTAKE VALVE	1
34	DSC-001884	ADAPTER 1/2"NPTM - JIC 6	1
35	TIA-6200	SAFETY VALVE 1/2"NPT 200 PSI	1
36	SS-1074	STREET ELBOW 3/4"NPT	1
37	DSC-001297	TEE 1/2"NPT (M-F-F)	1
38	SS-1250	REDUCER 1/2"NPT(M) - 1/4"NPT(F)	1
39	DSC-382	PNEUMATIC TUBE 6MM OD NATURAL	1
40	DSC-001895	MINIMUM PRESSURE VALVE 75-100HP	1
41	DSC-001927	SCAVENGE LINE ASSEMBLY 75-100HP	1
42	DSC-001926	ADAPTER 1/2"NPT(M) - 1/8"NPT(F)	1
43	DSC-612	INLINE FILTER	1
44	DSC-001358	CHECK VALVE 1/8"NPT(F)	1
45	DSC-001366	PRESS. TRANSD. CABLE CSC200300	2
46	DSC-001237	CSC200 / CSC300 PRESSURE TRANSDUCER	2
47	DSC-001566	COUPLING 1/4"BSPP FEMALE	2
48	DSC-158	1/4"BSPP ELBOW X 6MM TUBE FITTING	2
49	SS-23	3/8-16 X 3/4 HHCS B/M	2
50	DSC-001841	PRESSURE TRANSDUCER BRACKET	1
51	SS-1502	3/8-16 LOCKWASHER	2
52	SS-657	3/8-16 HEX NUT	2
53	DSC-002052	GHJK-SERIES SOLENOID N.C. 24VAC	1
54	DSC-002904	SOLENOID CABLE ASSEMBLY H-J-K	1

DETAIL B
PRESSURE TRANSDUCER ASSEMBLY
COMPONENTS

DETAIL A
SCAVENGE LINE ASSEMBLY
COMPONENTS

LID OF
DSC-001731
AIR/OIL RECEIVER

IMPORTANT NOTE: This print is the confidential property of DV SYSTEMS, INC. It is not to be used or reproduced in any manner, nor submitted to other parties for examination without the prior approval of DV SYSTEMS, INC. DV SYSTEMS, INC. is continually trying to improve its products, specifications subject to change without notice.

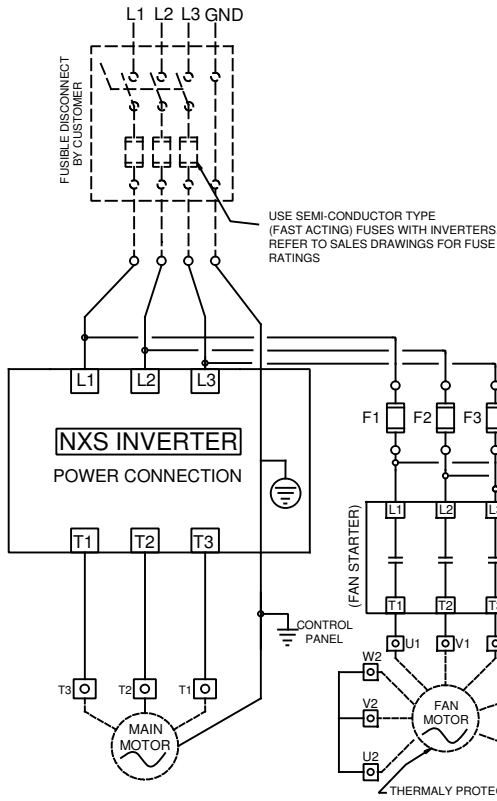
REV.	DATE	REVISION DESCRIPTION	PCN NO.
E	10/14/16	DSC-002904 ADDED	---
D	11/09/12	DETAIL A UPDATE	---
C	8/29/12	PARTS UPDATE	---



NAME OF PROJECT				DESCRIPTION OF DRAWING		
K100 SCREW COMPRESSOR				PNEUMATIC COMPONENTS		
DRAWN BY		CHECKED BY	DATE	SCALE	DRAWING NO.	SHT NO/REV.
LT			10/15/10	N.T.S	K100	D3 E

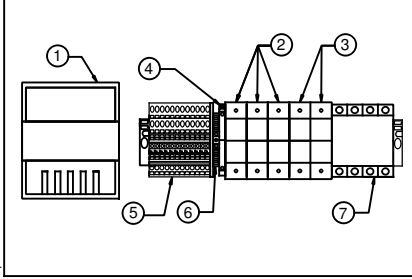
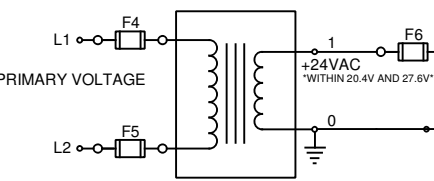
REV.	DATE	REVISION DESCRIPTION	PCN NO.
D	02/24/15	FAN FUSES ADDED	15-03
E	06/17/16	RSS INSTRUCTIONS UPDATED	---

POWER CIRCUIT SCHEMATIC



USE SEMI-CONDUCTOR TYPE (FAST ACTING) FUSES WITH INVERTERS. REFER TO SALES DRAWINGS FOR FUSE RATINGS

- W1 - FAN LEAD (BLACK)
- W2 - FAN LEAD (ORANGE)
- V1 - FAN LEAD (BLUE)
- V2 - FAN LEAD (GREY)
- U1 - FAN LEAD (BROWN)
- U2 - FAN LEAD (RED)
- TK - FAN THERMAL CONTACTS (WHITE)

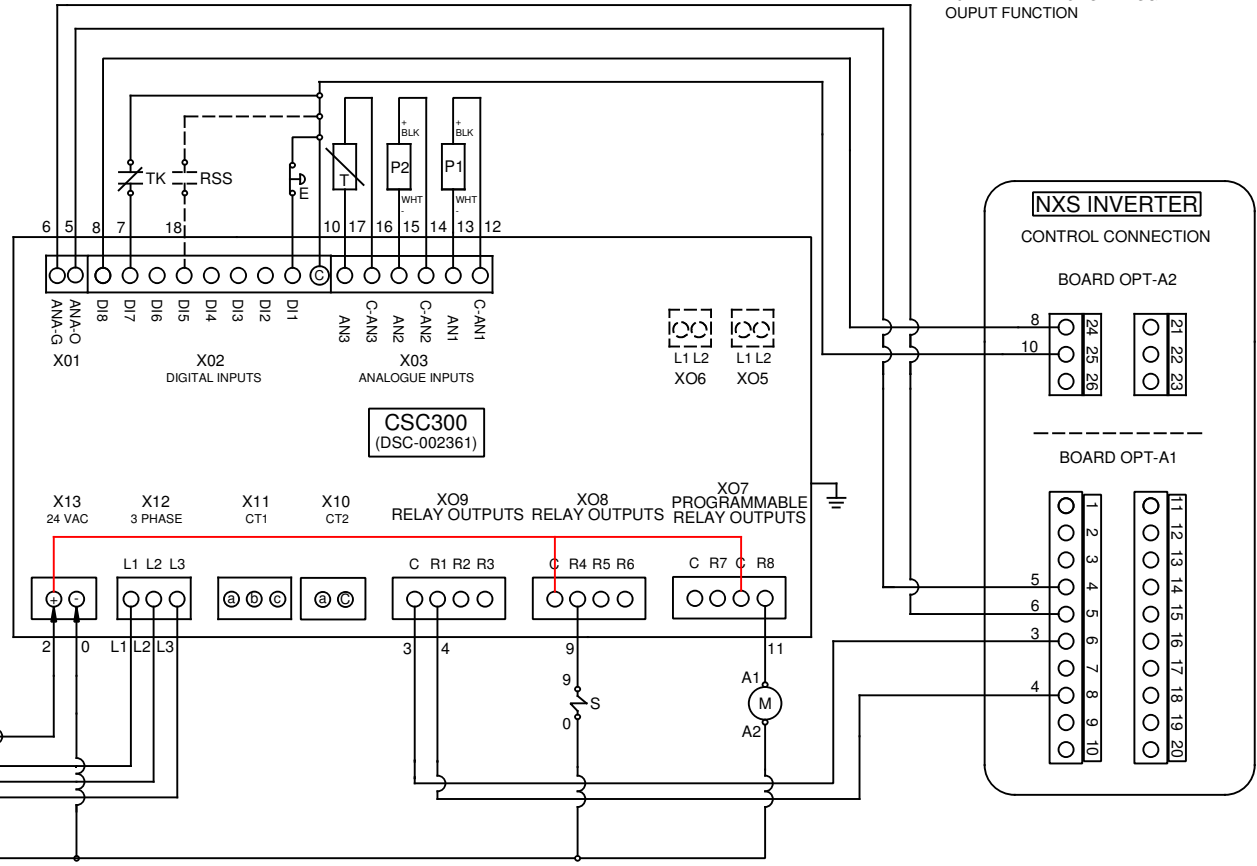


- PANEL SCHEMATIC
- ① TRANSFORMER
 - ② FAN FUSE F1/F2/F3
 - ③ PRIMARY FUSE F4/F5
 - ④ SECONDARY FUSE F6
 - ⑤ TERMINAL BLOCK
 - ⑥ GROUND TERMINAL
 - ⑦ STARTER CONTACTOR

VOLTAGE	FUSE TABLE						
	FUSE SIZE (AMPS)		ATDR, CC TIME DELAY		ATDR, CC		SMM TIME DELAY
	75HP	100HP	ATDR, CC	ATDR, CC	F6	F7	
460	4	5	0.5	0.5	5	NA	
575	4	5	0.5	0.5	5	NA	

WARNING: USE THE SAME FUSE TYPE & RATING

- E - EMERGENCY STOP
 - P1 - PRESSURE TRANSDUCER (OUTLET)
 - P2 - PRESSURE TRANSDUCER (INTERNAL)
 - S - SOLENOID N.C.
 - M - FAN STARTER
 - T - TEMPERATURE SENSOR
 - TK - FAN THERMAL CONTACT
 - RSS - REMOTE START/STOP
- (FIELD OPTION:
 INSTALL RSS TO #18 AND #10 TERMINAL BLOCK. INSTALL WIRE FROM #18 TO DI5. ON P18 CHANGE P18.08 FROM 'OFF' TO 'DI REMOTE START'. P10 CHANGE P10.12 FROM 'KEYPAD' TO 'EQUIPMENT DI')
- X07 - R7 AND R8 FOR PROGRAMMABLE RELAY OUTPUT FUNCTION



IMPORTANT NOTE: This print is the confidential property of DV SYSTEMS, INC. It is not to be used or reproduced in any manner, nor submitted to other parties for examination without the prior approval of DV SYSTEMS, INC. DV SYSTEMS, INC. is continuously trying to improve its products, specifications subject to change without notice.

FRACTIONAL DIMENSIONS: ±1/32
 DECIMAL DIMENSION: ±.005
 ANGLES: ±1°
 *UNLESS OTHERWISE SPECIFIED



NAME OF PROJECT				DESCRIPTION OF DRAWING			
75-100HP SCREW COMPRESSOR WITH VARIABLE SPEED CONTROLS				ELECTRICAL SCHEMATICS CSC300 & NX5 INVERTER			
DRAWN BY CHECKED BY DATE SCALE				DRAWING NO. SHT NO REV			
E.H.				CSC300-J75K100			
02/24/15				N.T.S.			
				E			